



## SAES NOTES – NOVEMBER 2019



Dear Friends:

I'm excited to announce the launch of our new SAES Podcast! You can access the episodes and subscribe through iTunes or Google Play. You can also scroll down below and click on the link that will take you directly to our hosting page.

If you weren't able to join us for Biennial in Houston, you might want to listen to the "Biennial Wrap Up" episode where I discuss some of the highlights with Mary Katherine Duffy (our Director of Professional Development) and also share an interview with our keynote presenter (Dr. Tina Payne Bryson) about her newest book which will be available in January ([The Power of Showing Up: How Parental Presence Shapes Who Our Kids Become and How Their Brains Get Wired](#)). Don't forget to check out the links included in the show notes for additional information.

In the future, we will use the Podcast as a way to highlight the amazing things taking place on our campuses and will also explore frequently asked questions of interest from school leaders. It will be a great way to connect with the SAES family in a convenient way that fits with your busy schedule.

With blessings,  
David+

---

### SAES EVENTS



**The Budgeting Process and  
The Financial Dashboard  
November 14, 2019  
6:00 pm - 8:00 pm (CST)**

What are the steps to a comprehensive budgeting process for a school? This webinar will explore best practices from the initial fall budgeting conversations, to setting tuition, to passing the final draft by the board. Participants will also explore the use of a historical financial dashboard to "mine" critical data to inform the



**Difficult Conversations  
November 15, 2019  
10:00 am (CST)**

No one enjoys difficult conversations. However, healthy leaders know how to prepare for and engage in challenging interactions. This webinar, led by Mary Katherine Duffy and The Rev. David Madison, focuses on eight proven strategies to help school leaders manage some of the challenging interactions they will face.

**\$99 for Member Schools**  
**\$199 for Non-Member Schools**

[Register Here](#)

---

## The Connie Wootton Excellence in Teaching Award Winners



### Early Learning Category

**Chris Mullen**  
**Calvary Episcopal Preparatory**  
**Richmond, TX**



### Elementary Category

**Colleen Kell**  
**St. Matthew's Episcopal Day School**  
**Austin, TX**



### Middle/Upper School Category

**Stephanie Crossno**  
**Casady School**  
**Oklahoma City, OK**



### Special Focus Category

**Lisa Day**  
**St. Mary's Episcopal School**  
**Edmond, OK**

---

## Ken Bastian Service Award Winners



**St. Andrew's**



**TMI Episcopal**

---

## Father David's Blog



### Do We Know What Game We Are Playing?

This blog entry explores Sinek's latest book (The Infinite Game). This was the subject of the Leadership Deep Dive at our Biennial Conference.

[Read More](#)



## SAES PODCAST

SUBSCRIBE ON APPLE  
iTunes OR GOOGLE  
PLAY

[Click here to listen!](#)

---

## ARTICLES OF INTEREST

### More Schools are Teaching Kids How to Cope With Emotions. Which Programs Actually Work?

"Teachers and administrators had succumbed to what she calls a 'bless their hearts' mentality, believing that students had too much on their plates to achieve in academics."

[READ MORE BY CAROLINE PRESTON, PBS NEWSHOUR](#)

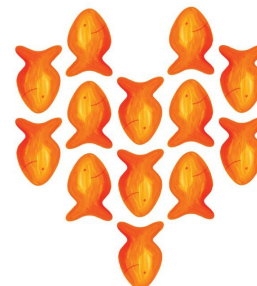


---

### Stop Trying to Raise Successful Kids

"They see their peers being celebrated primarily for the grades they get and the goals they score, not for the generosity they show."

[READ MORE BY ADAM GRANT & ALLISON SWEET GRANT, THE ATLANTIC](#)



---

### Screen Use Tied to Children's Brain Development

"In a study, preschoolers who used screens less had better language skills."

[READ MORE BY PERRI KLASS, THE NEW YORK TIMES](#)



---

## FEATURED CORPORATE SPONSOR



**G.E. ANDREWS**  
& Associates

G.E. Andrews & Associates specializes in chaplaincy search and placement. Utilizing our connections, we assist and serve Episcopal schools in identifying and hiring capable and experienced people to serve as chaplains. We work with our clients to discern the role of the spiritual leader within their community, and we and guide them through the search process accordingly.



**Follow us at:**  
**Southwestern Association of Episcopal Schools**  
**(@SAESchools) and LIKE our page!**

---

**Visit our website**

